

ANTIBODIES BY

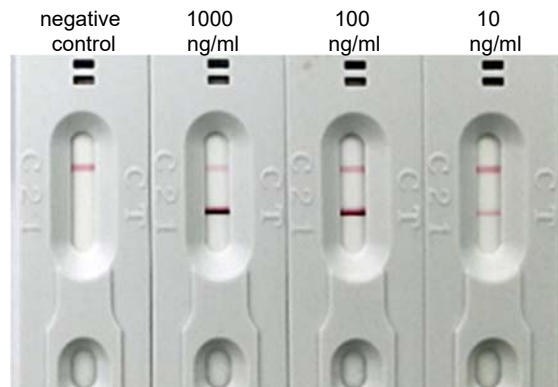
SORACHIM

anti-CRP monoclonal antibody CRP-100

SPECIFICATIONS

Specificity:	human C-reactive protein (CRP)
Source:	mouse
mAb isotype:	IgG1 - kappa
Purification:	affinity purification
Presentation:	PBS, pH 7.4, 0.09% sodium azide
Usage:	detection (with CRP-101)
Storage:	store at -20 °C (4°C for short term)

A
N
T
I
B
O
D
I
E
S



Lateral flow assay using CRP-101 as capture antibody and CRP-100 as detection antibody