

# ANTIBODIES BY

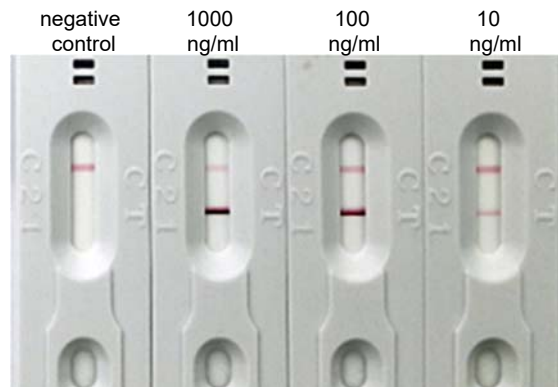
# SORACHIM

## anti-CRP monoclonal antibody CRP-101

### SPECIFICATIONS

<b>Specificity:</b>	human C-reactive protein (CRP)
<b>Source:</b>	mouse
<b>mAb isotype:</b>	IgG1 - kappa
<b>Purification:</b>	affinity purification
<b>Presentation:</b>	TBS, pH 7.4, 0.09% sodium azide
<b>Usage:</b>	capture (with CRP-100)
<b>Storage:</b>	store at -20 °C (4°C for short term)

A  
N  
T  
I  
B  
O  
D  
I  
E  
S



Lateral flow assay using CRP-101 as capture antibody and CRP-100 as detection antibody